

# Central City Line Steering Committee

Meeting #7

Thursday, December 1, 2016  
1:00 PM – 2:30 PM

Spokane Regional Transportation Council  
Paulsen Building  
421 W. Riverside Ave., Spokane, WA



## Agenda

- Welcome, Introductions and Agenda Review
- Public Expressions
- Administrative Tasks
- STA Update
- Small Starts Grant Submittal Timeline Update
- Preliminary Engineering Update
- Finance Working Group Update
- Land Use/Economic Development Working Group Update
- Outreach Strategies
- Next Steps



## Public Expressions

At this time, the Steering Committee will give the public an opportunity to express comments or opinions pertaining to the project

## Administrative Tasks

- Approval of July 18 meeting minutes
- Approval of September 29 meeting minutes

# STA Update

...

5

December 1, 2016



# STA Update

- Proposition 1 Passes!
- Other Election Results and Potential Ramifications



6


December 1, 2016



CENTRAL CITY LINE

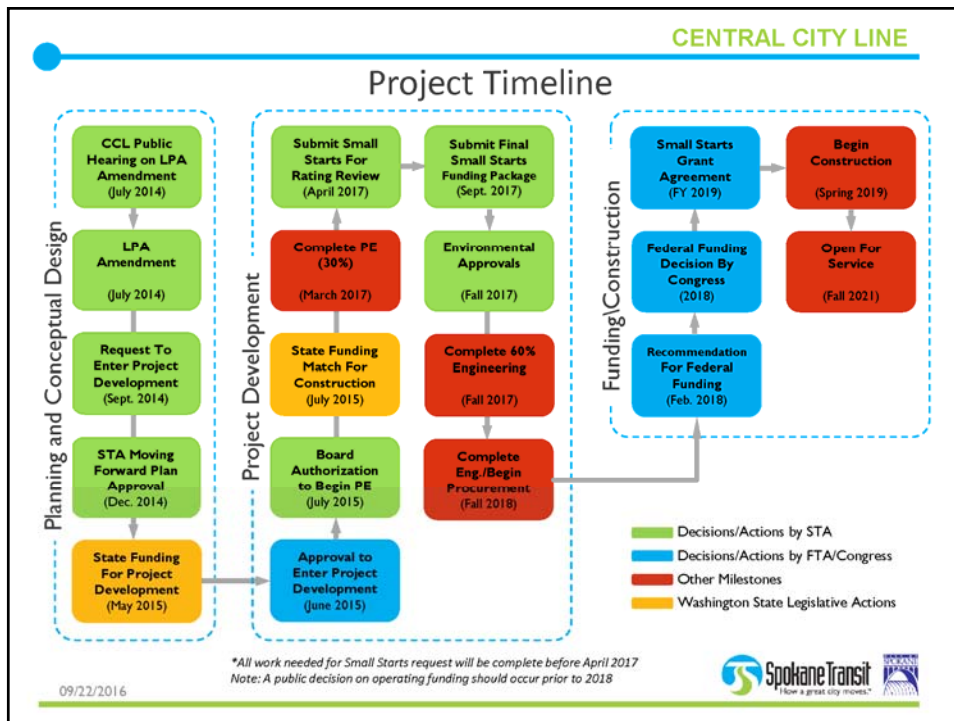
# Small Starts Grant Submittal Timeline Update

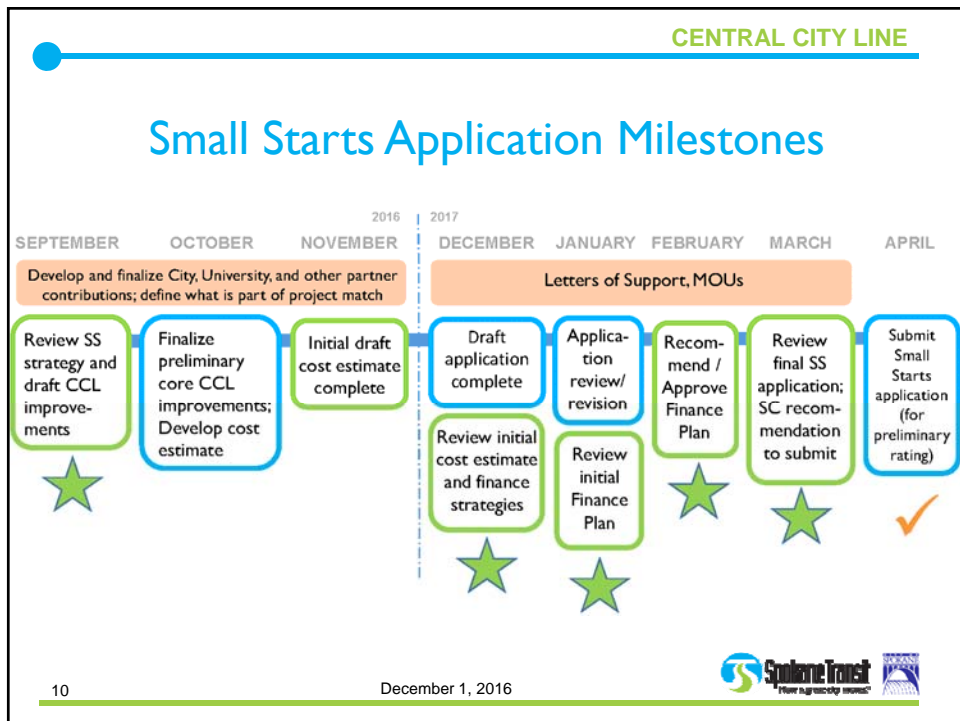
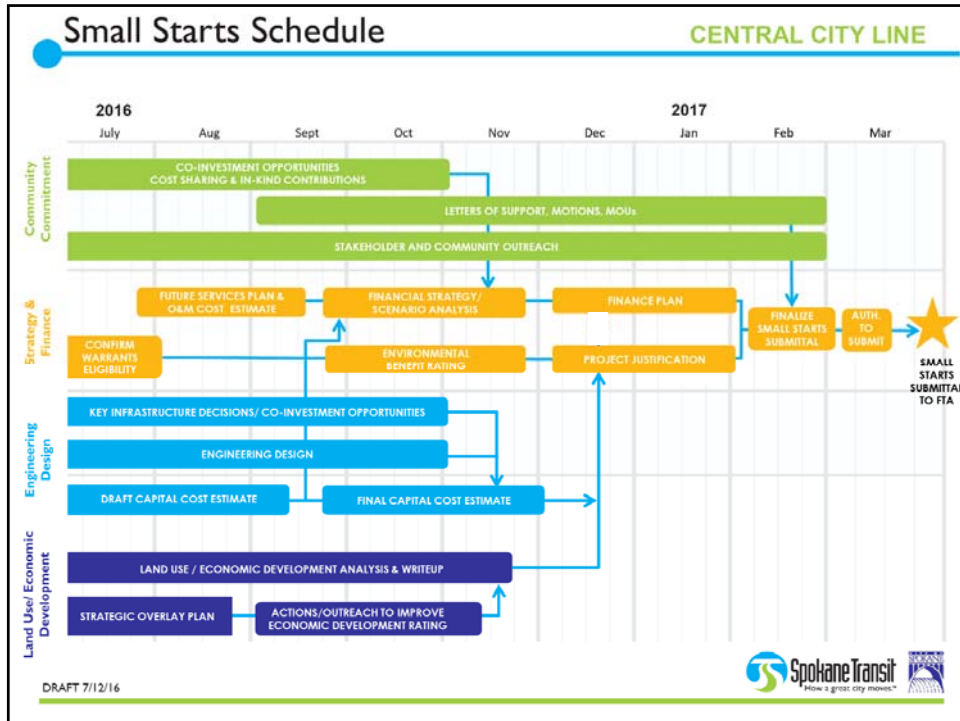
...



7

December 1, 2016





## Summary: Making the Best Case for the Central City Line

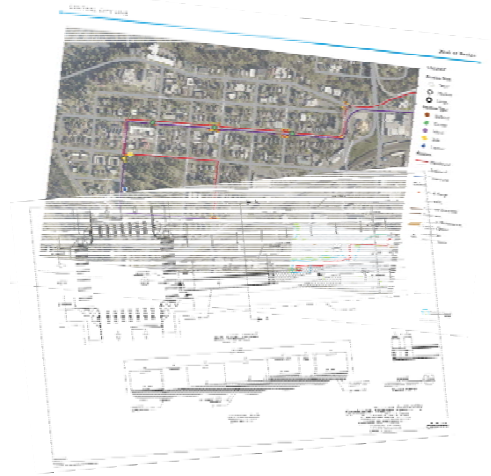
- Compelling narrative and business case
  - Land Use and Economic Development are especially important for the CCL
- Demonstrable community and policy support
- Track record of transit-supportive development and land use
- Strong project and agency financials
- Maximize local/private funds and commitment

## Preliminary Engineering Update

• • •

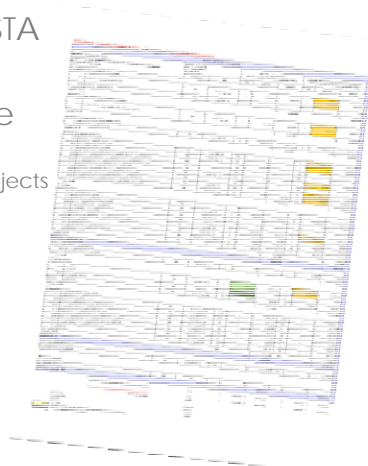
## CCL Core Infrastructure

- Roadway Geometric Improvements
- Sidewalk/ADA
- Traffic
- Stations/Layovers
- Charging Facilities
- Operations and Maintenance Facility



## Core Infrastructure – Capital Costs

- DRAFT Estimate reviewed with STA last week
- Preliminary Engineering Estimate
  - Based on initial engineering work
  - Coordination with manufacturers, peer projects
  - Allocated contingencies
- Closing Estimate Gaps
  - Traffic Related Improvements
  - Communications/IT Infrastructure/Fare Collections
  - Maintenance Facility
  - SCC Transit Center Improvements
  - Construction Phasing and Timeline
- Early Returns are Promising!



## Funding Strategies

- Key Challenge: Integration with Stakeholder Improvements / Co-Investments
  - City Capital
    - CSOs
    - Downtown Street Bond Projects
    - Cincinnati Greenway
  - College Capital
    - Cincinnati Street Plaza
  - Developer
  - Neighborhoods

## Funding Strategies

- Leveraging Federal FTA Dollars
  - Provides Multiplier to Local Funding
  - Federalizes Projects (NEPA, Bidding/Contracting)
  - Requires Commitment, Alignment of Timelines (Funding, Environmental, Design and Construction), Coordinated and Clear Responsibilities for Outreach, Design, Bidding, Construction Management, etc.
- Alternative Ways to Leverage CCL Project
  - Package as Economic Development Package with City CIP Projects
  - TIGER or other Funding Sources?



CENTRAL CITY LINE

### Funding Scenarios

- Identification, coordination, categorization of co-investment opportunities
- Categories:
  1. Core Elements
  2. Transit-Enhancing Co-Investments
  3. Opportunistic Investments

Central City Line - Small Starts Application  
Funding Commitment (Complementary Projects / Co-Investments)  
DRAFT - Revised November 25, 2016

Module	City CCL Reference	Complementary Project / Co-Investment	Project Status	Type of Improvements	Year(s)	CCL Investment Category
0001		Area of Interest Park Improvements - Phase 1	Active Plans	Area of Interest park and access	2016/17	1
0002		Area of Interest Park Improvements - Phase 2	Active Plans	Area of Interest park and access	2016/17	1
0003	000	Maple St / Riverside Ave / Paula Ave Pedestrian Project	Active Plans	Maple St / Riverside Ave / Paula Ave Pedestrian Project	2016	1
0004	000	200 Block 24 Central Park & 5th St Improvements	Active Plans	200 Block 24 Central Park & 5th St Improvements	2016	2
0005	000	Maple St / Riverside Ave / Paula Ave Pedestrian Project	Active Plans	Maple St / Riverside Ave / Paula Ave Pedestrian Project	2016/17	1
0006	011/010/02	Maple St / Riverside Ave / Paula Ave Pedestrian Project	Active Plans	Maple St / Riverside Ave / Paula Ave Pedestrian Project	2016	1
0007	011/010/02	Maple St / Riverside Ave / Paula Ave Pedestrian Project	Active Plans	Maple St / Riverside Ave / Paula Ave Pedestrian Project	2016	1
0008	011/010/02	Maple St / Riverside Ave / Paula Ave Pedestrian Project	Active Plans	Maple St / Riverside Ave / Paula Ave Pedestrian Project	2016	1
0009	011/010/02	Maple St / Riverside Ave / Paula Ave Pedestrian Project	Active Plans	Maple St / Riverside Ave / Paula Ave Pedestrian Project	2016	1
0010	011/010/02	Maple St / Riverside Ave / Paula Ave Pedestrian Project	Active Plans	Maple St / Riverside Ave / Paula Ave Pedestrian Project	2016	1
0011	011/010/02	Maple St / Riverside Ave / Paula Ave Pedestrian Project	Active Plans	Maple St / Riverside Ave / Paula Ave Pedestrian Project	2016	1
0012	011/010/02	Maple St / Riverside Ave / Paula Ave Pedestrian Project	Active Plans	Maple St / Riverside Ave / Paula Ave Pedestrian Project	2016	1
0013	011/010/02	Maple St / Riverside Ave / Paula Ave Pedestrian Project	Active Plans	Maple St / Riverside Ave / Paula Ave Pedestrian Project	2016	1
0014	011/010/02	Maple St / Riverside Ave / Paula Ave Pedestrian Project	Active Plans	Maple St / Riverside Ave / Paula Ave Pedestrian Project	2016	1
0015	011/010/02	Maple St / Riverside Ave / Paula Ave Pedestrian Project	Active Plans	Maple St / Riverside Ave / Paula Ave Pedestrian Project	2016	1
0016	011/010/02	Maple St / Riverside Ave / Paula Ave Pedestrian Project	Active Plans	Maple St / Riverside Ave / Paula Ave Pedestrian Project	2016	1
0017	011/010/02	Maple St / Riverside Ave / Paula Ave Pedestrian Project	Active Plans	Maple St / Riverside Ave / Paula Ave Pedestrian Project	2016	1
0018	011/010/02	Maple St / Riverside Ave / Paula Ave Pedestrian Project	Active Plans	Maple St / Riverside Ave / Paula Ave Pedestrian Project	2016	1
0019	011/010/02	Maple St / Riverside Ave / Paula Ave Pedestrian Project	Active Plans	Maple St / Riverside Ave / Paula Ave Pedestrian Project	2016	1
0020	011/010/02	Maple St / Riverside Ave / Paula Ave Pedestrian Project	Active Plans	Maple St / Riverside Ave / Paula Ave Pedestrian Project	2016	1



CENTRAL CITY LINE

### Potential Funding Scenarios

Funding Scenarios	CCL Core Elements (1)	Transit Enhancing Co-Investments (2)	Opportunistic Investments (3)
1 CCL Project Funds Core Elements Only (1)	Yes	No	No
2 CCL Funds Core Elements (1), Plus Key Transit Enhancing Co-Investments (2)	Yes	Yes	No
3 CCL Funds Core Elements (1), Plus Transit Enhancing Co-Investments (2), Plus Maximize Funding of Opportunistic Investments	Yes	Yes	Yes



## Downtown Spokane Street Design

- **Defining Project Scope and Co-Investments**
  - Need to confirm project elements included in FTA project scope and finance plan
  - Co-investments and local funding commitment have direct impact on FTA funding competitiveness
  - Ongoing discussions with City of Spokane to align capital investments and maximize community value
    - Coordinated outreach efforts with downtown stakeholders
    - City scoping of 1<sup>st</sup> Ave, Sprague Ave, Main Ave, Riverside Ave Projects in 2017
    - City update of Downtown Plan
    - City Parking Plan development



## Finance and Strategy Working Group Update

...



CENTRAL CITY LINE

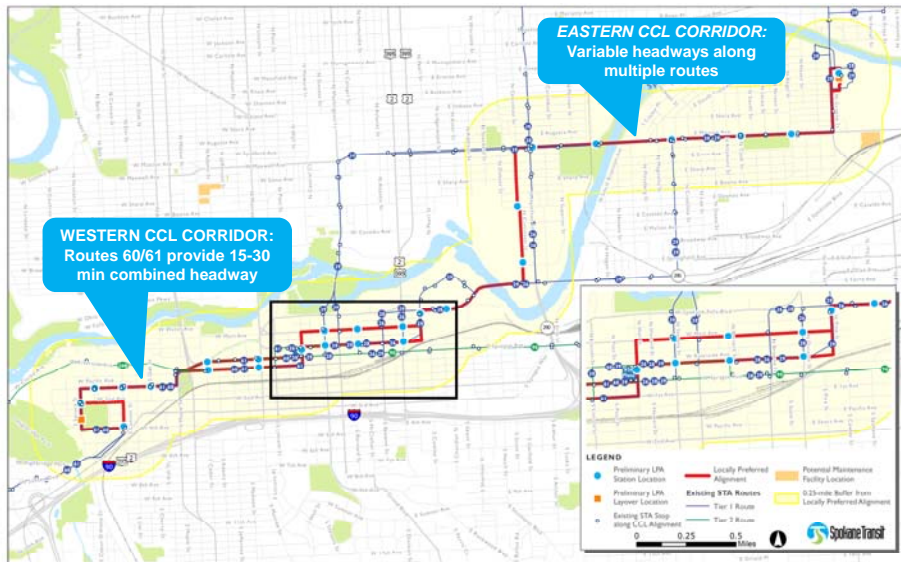
### CCL Transit Service Objectives

- Improve transit quality of service for Customers
  - Increase frequency, reliability, and hours -- all day every day
  - Improve convenience, accessibility, and ease of use
- Restructure existing routes impacted by CCL
  - Maximize network connectivity and service efficiency
- Exceed FTA minimum Small Starts transit service requirements
  - 14 hrs./day weekdays; minimum headway reqts.
- Implement changes consistent with STA Moving Forward vision and service expansion



CENTRAL CITY LINE


### Existing CCL Corridor Service



**CENTRAL CITY LINE**

## CCL Service Plan Development


Service Plan Scenario	Hours of Service	Service Frequency	Total Annual Hours of Service
<b>Scenario 1</b> (Planning-Phase Estimate)	18 hrs Weekdays 17 hrs Saturdays 12 hrs Sunday/Holidays	10 min all day; 15 min eves; 30 min early/late 15 min all day 15 min all day	<b>30,088</b>
<b>Scenario 2</b> (FTA Small Starts Minimum Reqts.)	14 hrs Weekdays only	10 min peak & 15 min off peak	<b>17,000</b>
<b>Scenario 3</b>	17 hrs Weekdays 17 hrs Saturdays 12 hrs Sunday/Holidays	15 min for 14 hrs & 30 min early/late 15 min for 12 hrs & 30 min early/late 15 min for 12 hrs & 30 min early/late	<b>21,100</b>
<b>Scenario 4</b>	17 hrs Weekdays 17 hrs Saturdays 12 hrs Sunday/Holidays	7.5 min for 5 hr peak; 15 min for 9 hrs; 30 min off peak 15 min for 12 hrs & 30 min early/late 15 min 12 hrs & 30 min early/late	<b>26,200</b>

23 December 1, 2016 

**CENTRAL CITY LINE**

## Next Steps

- Develop O&M cost estimates for each alternative
- Select preferred CCL service plan as basis for Small Starts O&M cost estimating and stakeholder communications
- Assess network-level impacts based on CCL and STA Moving Forward framework
- Determine net system-wide O&M costs for Small Starts Finance Plan

24 December 1, 2016 

CENTRAL CITY LINE

# Land Use / Economic Development Working Group Update

...

25 December 1, 2016




CENTRAL CITY LINE

## Telling the CCL Story

Presentation Purpose and Intent

- Easy to use and understand medium for stakeholders to convey the compelling story
- Presentation must be:
  - Clear and easy to understand
  - Answer the basic questions
  - Engaging and compelling

26 December 1, 2016



## Outreach Strategies

• • •

## Upcoming Outreach

- Wed 12/7: Station Area Drop-in Workshop (downtown focus areas)
  - Community Building lobby, 12 – 2:30 PM
- PowerPoint presentation that may be used to tell the CCL story
- Project team is working on additional outreach ideas:
  - Station-area charrettes
  - Online outreach
  - Marketing Associates of Spokane, GSI “Good Morning Spokane”, etc.
  - Steering Committee outreach to the community
  - Part of STA Moving Forward Public Outreach, Marketing and Advertising strategies

## Letters of Support

- Letters of support will be requested to document support in the Small Starts application
- Will develop a letter template and send out to groups
- Very important piece of the application!

## Next Meeting Date

• • •  
January

Thank you!  
...