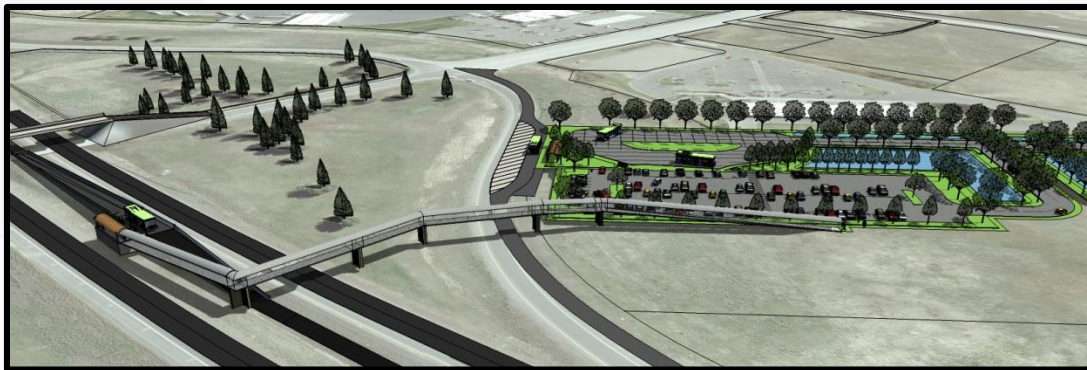


West Plains Transit Center

Joint Open House / Traffic Scoping Meeting

March 24, 2015

4:00 PM to 6:00 PM



Outline for Tonight

Open House Presentation

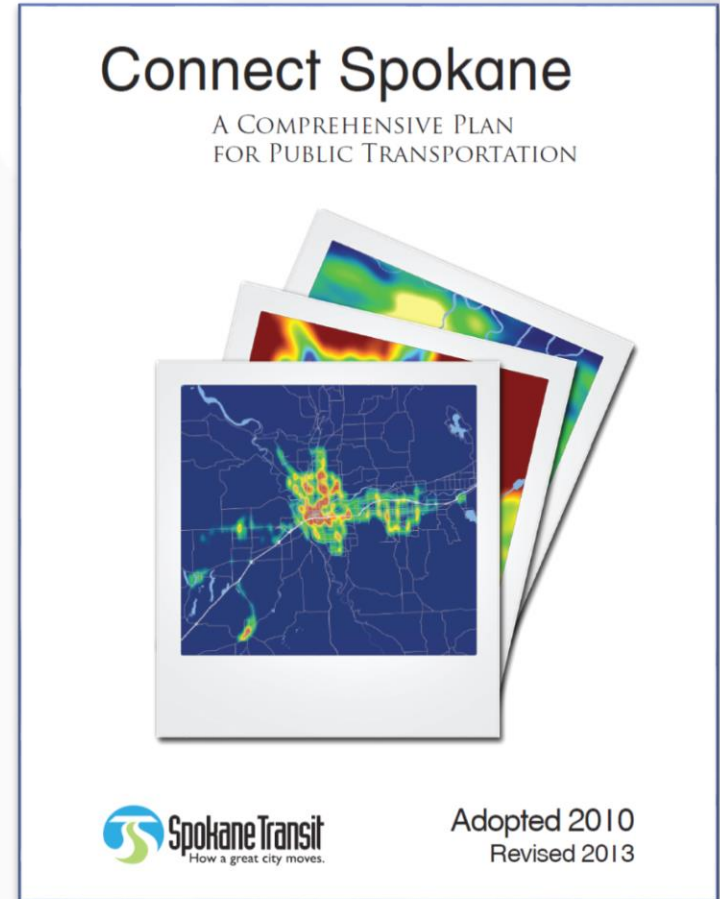
- Present information about the West Plains Transit Center

Traffic Scoping Meeting

- Present information on the future traffic impact analysis

Connect Spokane

- Connect Spokane, STA's Comprehensive Plan
- Set forth a vision for transit over the next 30-years
- Establishes goals and policies to guide future decisions by STA
- Strive to encourage ridership while providing high quality, convenient services

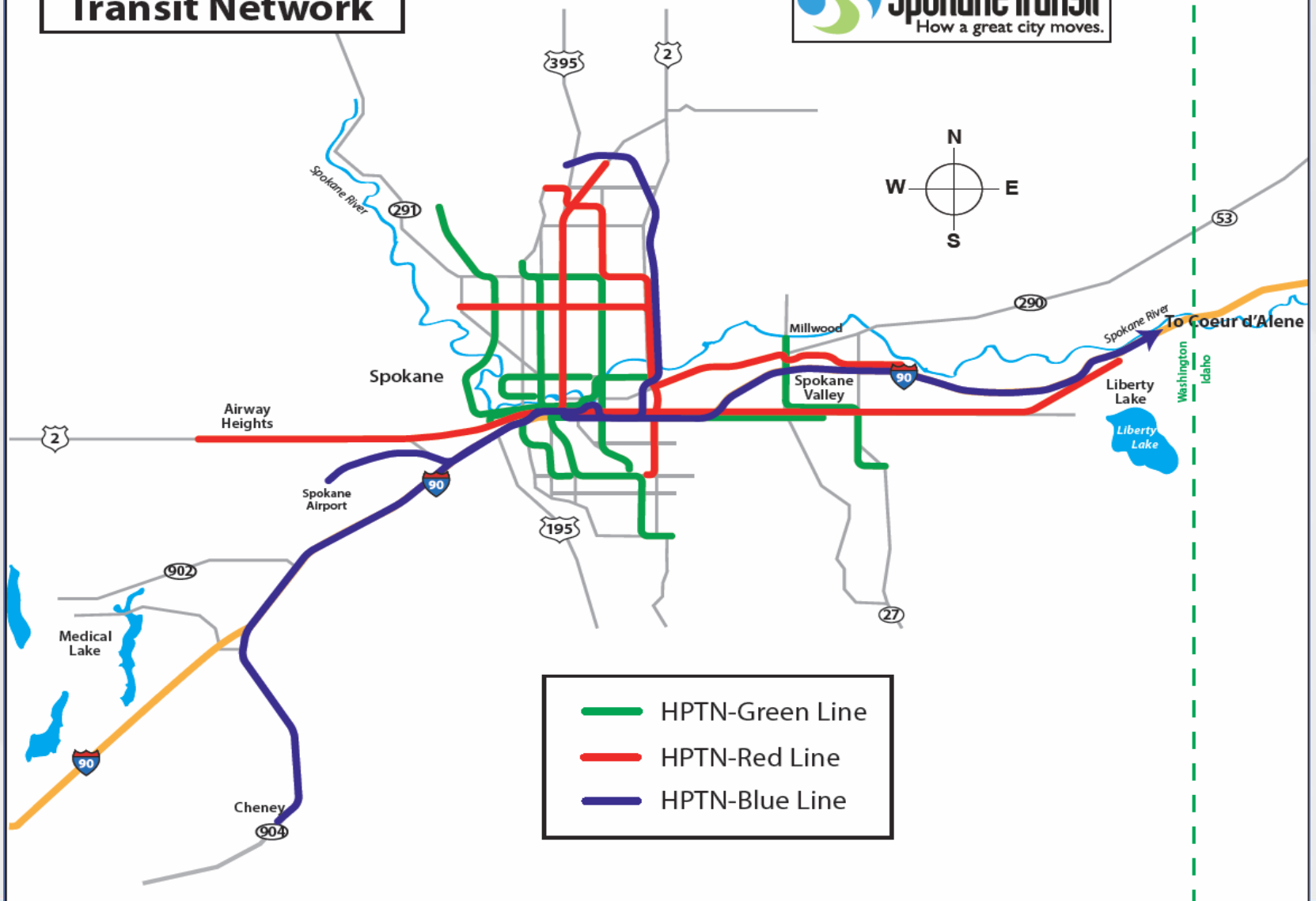


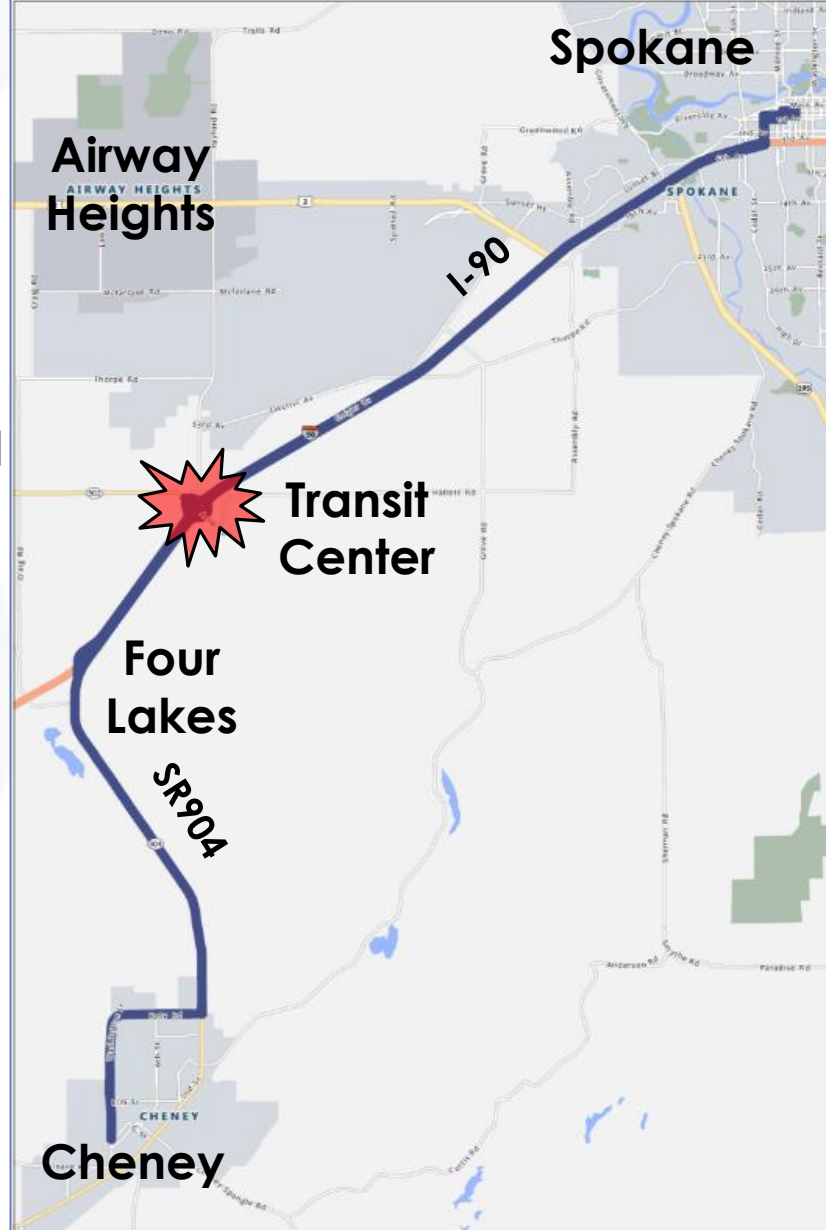
High Performance Transit Network

- In 2009, STA begins planning for a High Performance Transit Network
- The goal of the network is to be:
 - Comprehensive (multiple corridors)
 - All-day, two-way service
 - Reliable
 - Frequent
 - Improved amenities
 - Competitive speed
- In 2010, the High Performance Transit Network is included in Connect Spokane



High Performance Transit Network





Medical Lake

Airway Heights

Spokane

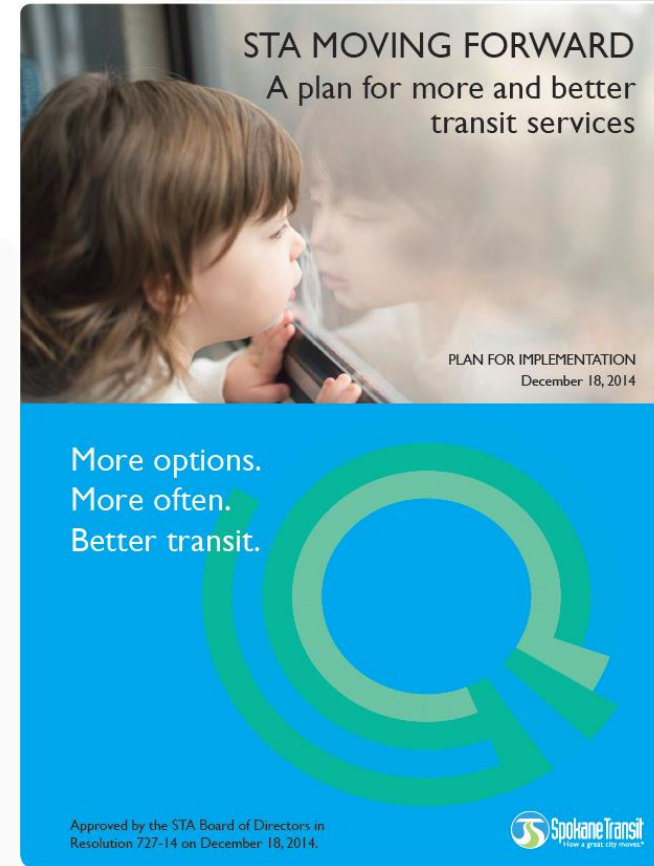
Transit Center

Four Lakes

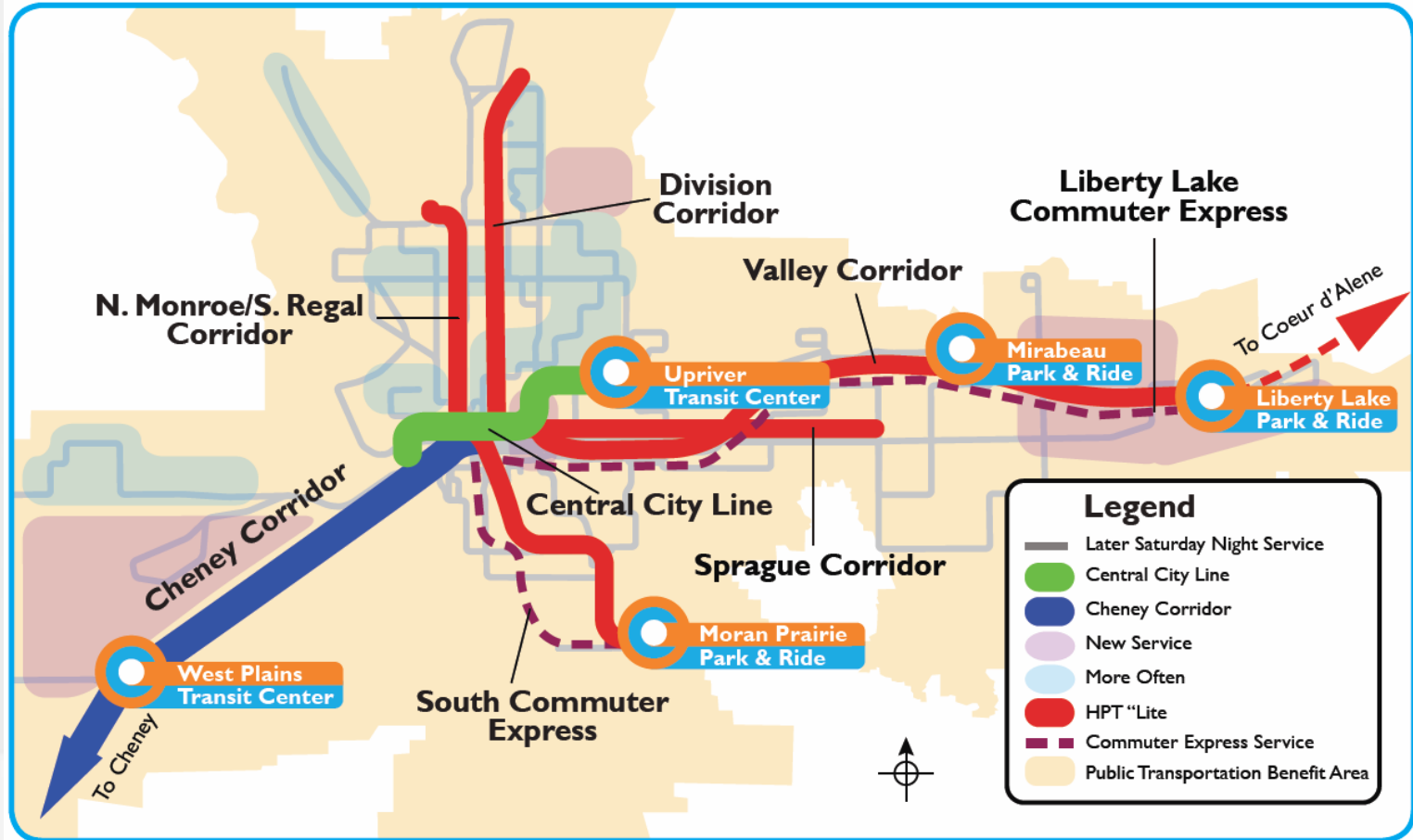
Cheney

STA Moving Forward

- In April 2012, the STA Moving Forward planning project begins
- Purpose: Identify potential improvements for implementing regional plans during a ten-year period
 - Phase I
April 2012 to July 2012 - Develop a list of service and facility improvements; gather public input
 - Phase II
September 2012 to October 2013 – Analyze short list of projects, define costs and benefits; Corridor Advisory Panel created to review/study the corridor
 - Phase III
October 2013 to December 2014 – Gather public input, finalize the plan
- STA Board Adoption December 2014



STA Moving Forward



West Plains Transit Center

- A park and ride or transit center near Exit 272 has been mentioned in transit plans for over 20 years
- Longstanding transit needs in the area:
 - Connections that allow improved mobility on the West Plains
 - Transit service on the south side of I-90 to serve increased development
 - More park and ride facilities on the West Plains

Project Purpose

- The purpose of the transit center is to:
 - Improve connectivity between cities in the West Plains
 - Provide transit access to developing areas south of I-90
 - Increase productivity on existing routes in the area
 - Provide park and ride capacity for bus and vanpool commuters



Site Selection Process

- STA conducted a preliminary feasibility study in 2012 to consider various locations
- 6 sites were selected for evaluation using 7 different criteria
- A site on the south side of the interchange was selected as the preferred site

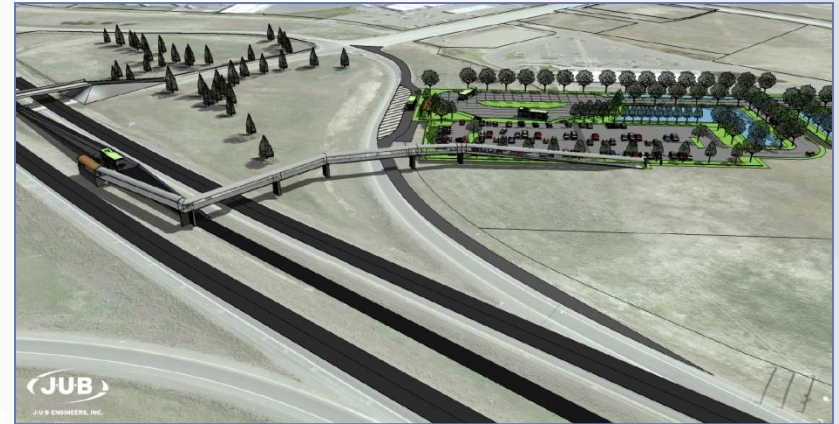


Project Benefits

- Project benefits Include:
 - Improve connectivity between cities on the West Plains
 - Allows riders to avoid out-of-direction travel to downtown Spokane
 - Provide transit access to the area
 - Provide park and ride capacity to bus and vanpool
 - Provide a park and ride option for commuters heading into Spokane
 - Supplement service by other transit providers

West Plains Transit Center

- Park and Ride lot
 - 100+ spaces with room for future expansion
 - Passenger loading and alighting platform
 - Shelters, bicycle lockers, real time signage
- Eastbound off-ramp flyer stop
 - Passenger loading and alighting platform
 - Shelter, possible real time information signage
- Westbound center median flyer stop
 - Passenger loading and alighting platform
 - Shelter, possible real time information signage
 - Pedestrian bridge from the park and ride lot to the loading platform

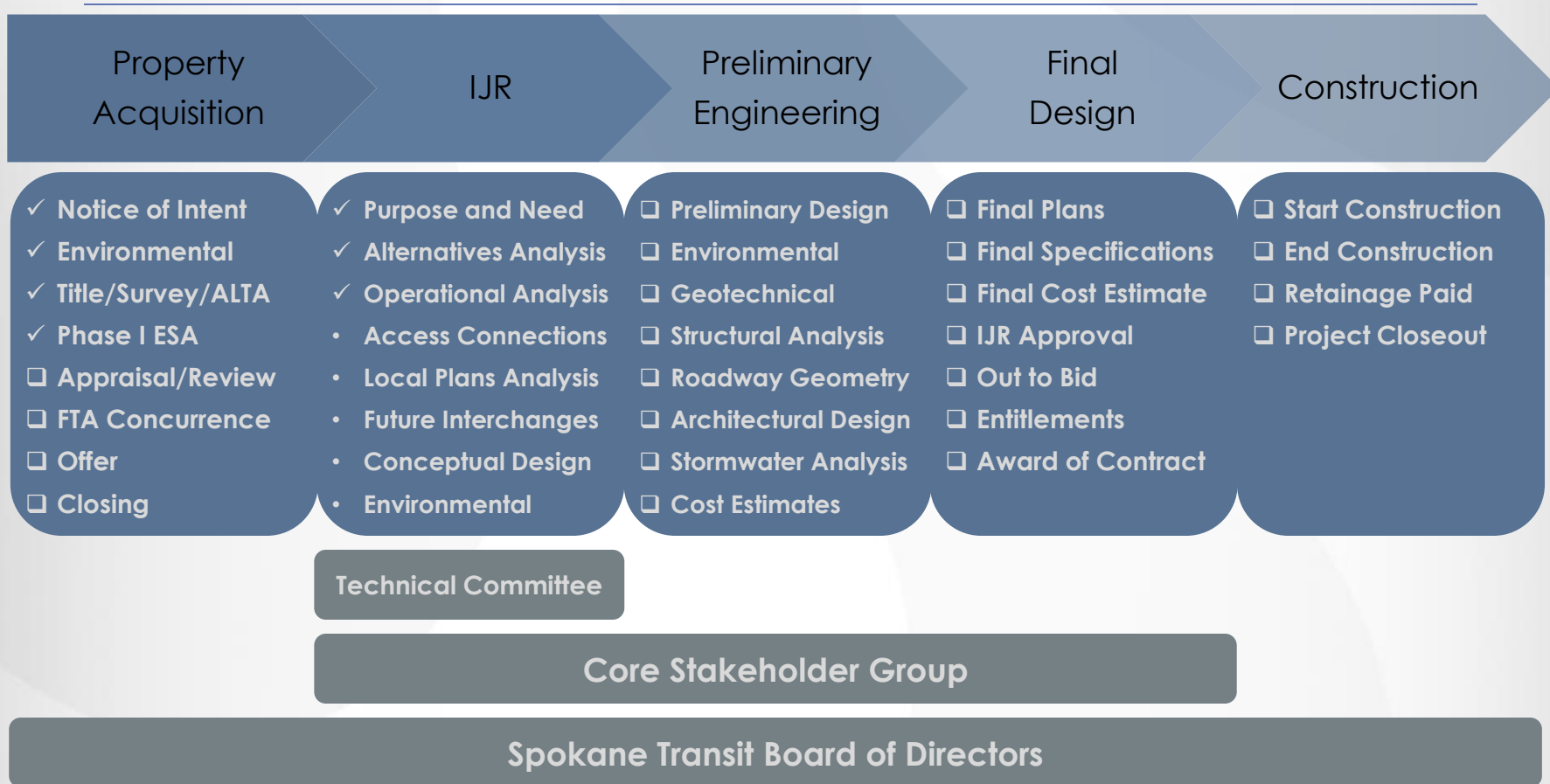


Project Status

- H.W. Lochner, Inc. is the consulting engineer
- Two (2) committees established to assist in design and decisions
- Interchange Justification Report (IJR) is in process
 - Three flyer stop alternatives considered
 - Existing design is the Board approved alternative
- Right of way acquisition process has begun
- Conceptual design is underway

**Subject to funding, the facility could be in full operation by
Fall 2018**

Process to Date



Funding Status Update

- Regional Mobility Grant
 - Application submitted on October 6, 2014
 - Total grant request was \$8.7 million
 - Funding would be provided between two (2) biennia, 2015-2017 and 2017-2019
 - Funding decision by Legislature in April/May 2015

Additional Information

www.stamovingforward.com

The screenshot shows the STA Moving Forward website interface. At the top, there is a navigation bar with the logo and menu items: Projects, Participate, Benefits, Funding, and People. Below the navigation bar, there is a section titled "Select an Upcoming Project To Learn More" with sub-links for "Feedback" and "Documents". The main content area is divided into three columns of project categories:

- Basic Route Improvements System-Wide**
 - 1) Saturday nights
 - 2) Network Optimization
- Basic Route Improvements- Route-Specific**
 - 3) West Central Spokane Improvements
 - 4) Wellesley weekend service
 - 5) West Plains Improvements
 - 6) Logan - Lincoln Heights Connection
 - 7) Indian Trail Service
 - 8) North Nevada Weekend Service
 - 9) East Indiana and Mission and South Liberty Lake: Add new service
 - 10) Hillyard Service Improvements
 - 11) Spokane Valley Improvements
 - 12) Airway Heights
- Commuter Service Investments**
 - 13) New South Commuter Express
 - 14) Reinstate Liberty Lake Express
- Connection Facilities**
 - 15) Moran Prairie Park and Ride
 - 16) Liberty Lake Park and Ride
 - 17) New Mirabeau Transit Center
 - 18) Upriver Transit Center
 - 19) West Plains Transit Center
- General Services**
 - 20) Expand and Replace Fleet
 - 21) Maintenance Facilities
 - 22) Grow Paratransit
 - 23) More Shelters
 - 24) More Bike Capacity
 - 25) Grow Vanpool
 - 26) More Bike Lockers
- High Performance Transit lite**
 - 27) North Monroe - South Regal HPT *lite*
 - 28) Division and Sprague Reliability Improvements
 - 29) Interstate HPT *lite*
 - 30) Liberty Lake Line, South Valley and Future Kootenai County Service
 - 31) Pilot Coeur d'Alene Service
 - 32) East Sprague HPT *lite*
 - 33) North Division HPT *lite*
- High Performance Transit Network**
 - 34) High Performance Transit Network
 - 35) Central City Line (HPT)
 - 36) Cheney HPT Corridor

Below the grid, there is a detailed view of project 19, "Construct the West Plains Transit Center to connect West Plains communities and provide a park and ride for commuters". The text describes the facility's location at Exit 272 of I-90 and its purpose to address transportation issues on the West Plains. It also provides links for "Additional Information" and "Official Documents", including a fact sheet, committee handout, site plan, and connection facilities PDF.

Click **"Projects"**
Click **"West Plains Transit Center"**

Project information updated regularly so check back often

This concludes the overview of the West Plains Transit Center

We will now focus on the traffic impact study and the scope of the analysis



Traffic Impact Analysis

- Spokane County Code requires a traffic impact analysis be completed for the project
 - This process is separate from the Interchange Justification Report (IJR) process
 - The analysis is specific to local streets and Interstate 90
- A public traffic scoping meeting is required
 - Purpose of this meeting
 - Gather public input into the scope
- A second public meeting will be held upon the completion of the draft report to present the findings

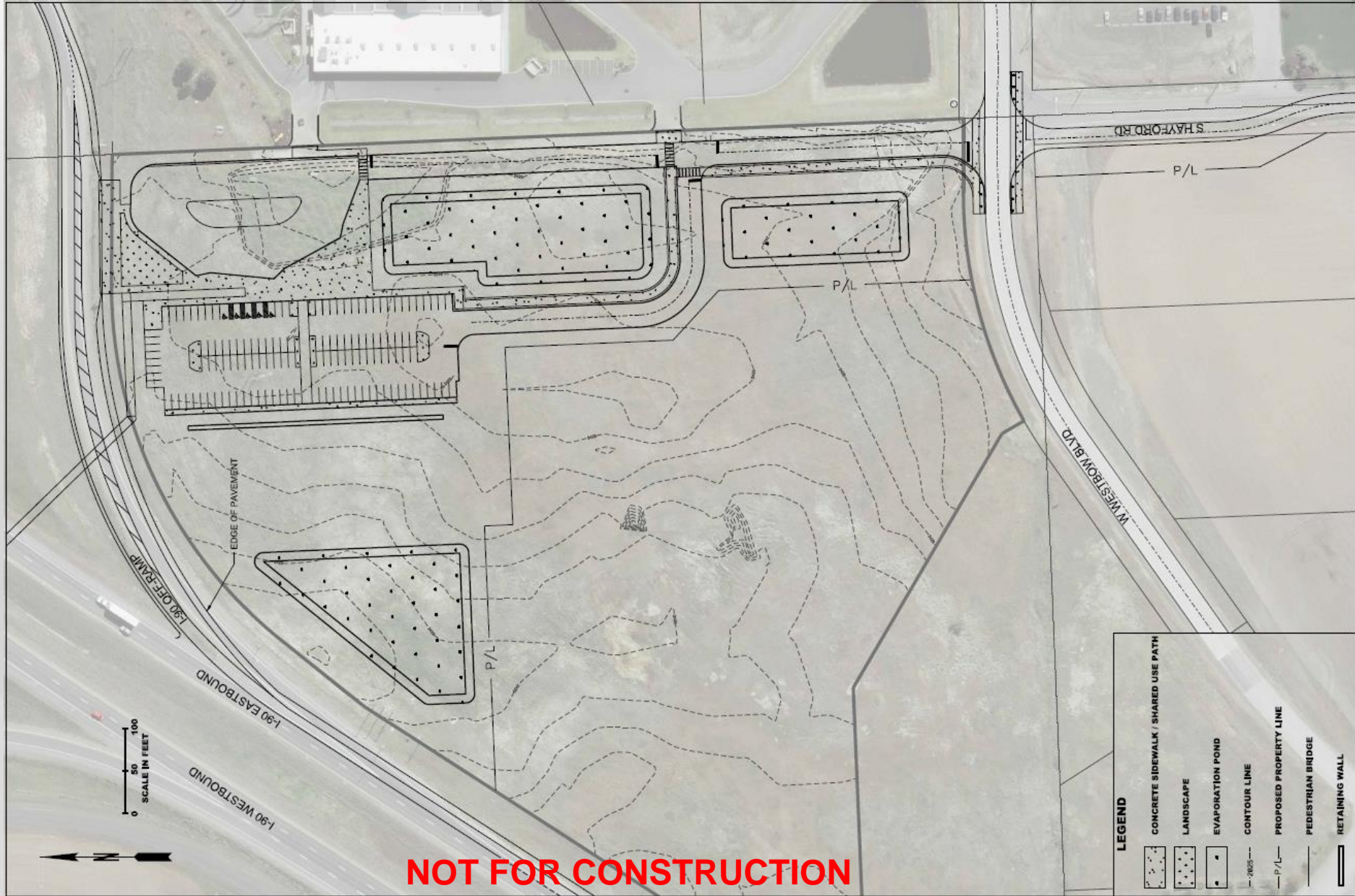
SPOKANE COUNTY ROAD STANDARDS

January 2010

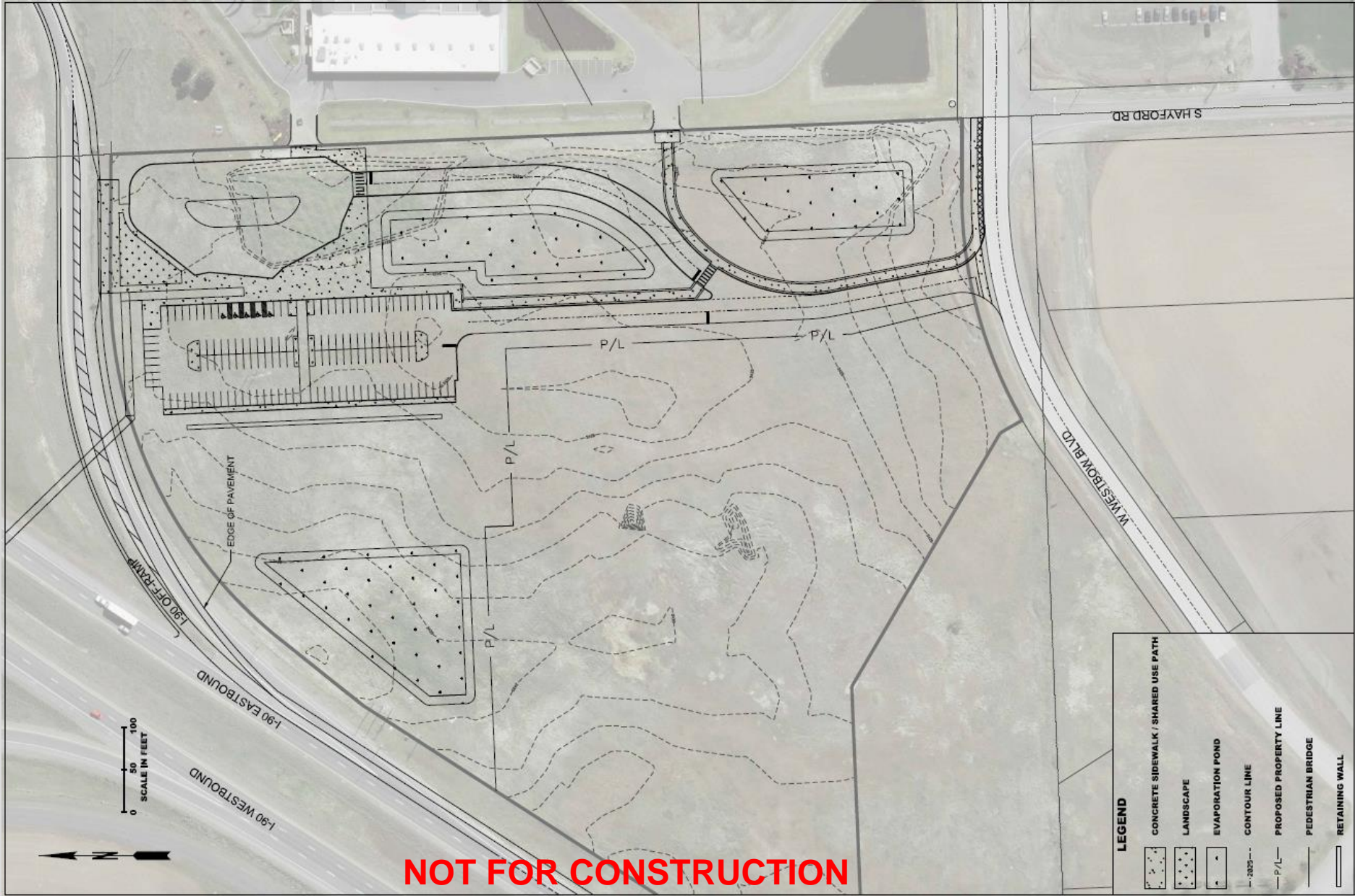


SPOKANE COUNTY ENGINEERS

1026 W. BROADWAY AVENUE
SPOKANE, WA 99260
(509) 477-7400



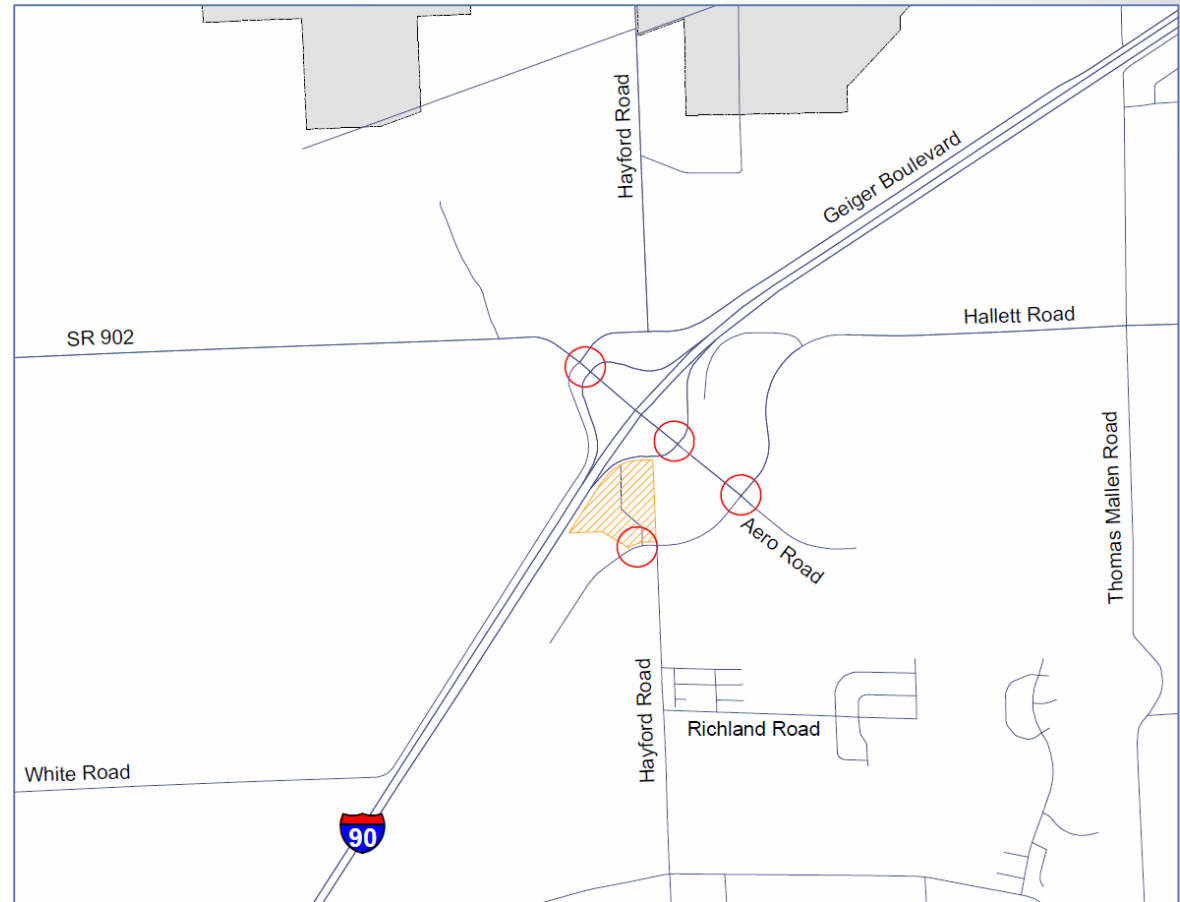
NOT FOR CONSTRUCTION



Traffic Impact Analysis

The proposed scope of the traffic impact analysis as the following intersections:

- SR902 and Hayford
- North Ramp Terminal
- South Ramp Terminal
- Westbow & Aero
- Site Driveway



Questions/Concerns?

- Questions or comments regarding the scope of the traffic impact analysis can be submitted via comment sheet prior to leaving tonight.
- If you have any questions, please feel free to ask any of the staff members in attendance.
- If you would like to be notified of future meetings regarding the traffic impact analysis, please complete the sign-in sheet at the traffic table, or submit a comment sheet.

Thank you for
coming!